

TAKE ADVANTAGE OF OUR SERVICE OFFERINGS IN YOUR MICROSOFT AZURE ENVIRONMENT

Our dedicated team of Microsoft experts will help you set up your cloud environment correctly, ensure the highest standard of security, and significantly increase your company's productivity.

What are the benefits?

Access to the knowledge and experience of engineers specializing in configuring Microsoft 365 environments – a unique know-how that will ensure correct implementation and the ability to use the full potential of the Microsoft platform in your company.

Flexible forms of settlement and three packages to choose from – we have prepared our offer based on many years of experience in working with IT departments, giving you the comfort of choosing the most optimal option for your company.

Individual approach – if your needs go beyond the content of our packages, we will prepare an individual offer for you, tailored to your needs and requirements.

Comprehensiveness – you can order licenses, implementation and personalized configuration all in one place, you don't have to look for other subcontractors.

A wide range of engineering competencies – Senetic has 6 out of 6 possible Solutions Partner specializations from Microsoft: Data & AI, Digital & App Innovation, Infrastructure, Business Applications, Modern Work and Security, as well as Advanced Specialization in the Adoption and Change Management category. Few Microsoft partners can boast such a range of competencies and skills.



Modern Work

Business Application

Security

Infrastructure
Azure

Data & AI
Azure

Digital & App Innovation
Azure

Advanced Specialization | Adoption and Change Management

BASIC Package Free	STANDARD Package It includes all the BASIC functions plus additionally:	PREMIUM Package Includes all BASIC and STANDARD features, plus:
Assistance in the deployment and configuration of Azure subscriptions - up to 3 sessions per month.	Configuration of basic security features - MFA, compliance settings - up to 2 configurations per month.	Configuring more advanced security features - MS Defender for Cloud, Sentinel - up to 2 configurations per month.
Help with basic issues (login problems, password reset, portal navigation) - up to 5 incidents per month.	Support in configuring and managing Azure Backup and Site Recovery (ASR) - up to 2 configurations per month.	Help with automation of business processes with Azure Logic Apps and Azure Automation.
Guidance on utilizing Azure services, including resource assignment and service selection.	Migration of environments from other cloud platforms and on-premises services (Google Cloud, AWS).	Help with creating templates (e.g. custom Azure Resource Manager templates) - up to 2 templates per month.
Dedicated Customer Advisor available from 9:00 a.m. to 5:00 p.m., Monday to Friday.	Azure Monitor: configuration of Azure Monitor for comprehensive monitoring and alerting.	Integration of Azure identity with other systems (finance, ERP, HR, CRM) - up to 2 integrations per quarter.
Access to trial licenses (Azure Pass) - one per year.	Help in setting up and managing network configurations in Azure - up to 2 configurations per month.	Advanced network configurations (Azure, on-premises).
Access to Microsoft Premier Support for Partners (Placing Cases with Microsoft on Behalf of the Customer).	Help in configuration and management of Azure App Services - up to 2 configurations per month.	Guaranteed priority, the fastest response times and access to senior engineers.
Daily azure usage monitoring to detect suspicious spikes in costs.	Landing zone configuration - up to 2 configurations per month.	15% discount on engineering hours when the hours package is exhausted.
Configuration of alerts and cost monitoring to stay within a predefined budget.	Quarterly cost optimization recommendations, such as resizing resources, using reserved instances, etc.	
Possibility to set up support tickets 24/7.	Performance recommendations: tips for making applications run faster.	
Unlimited pre-sales support.	Security enhancements: threat and vulnerability detection to prevent security breaches.	
	Free quarterly consultations and updates on the latest changes to Microsoft services.	

ALL SERVICES ARE PROVIDED REMOTELY

PRICE

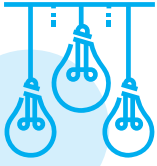
No fees

60 EUR/hour*

70 EUR/hour*

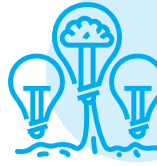
*As part of the packages, you need to buy 15 hours of qualified engineers to use according to your needs within 12 months

Why we recommend this model you for a start?



Flexible

– you have 12 months to use the money



Cost-effective

– you only pay for what you use



Customized

– for a separate, dedicated project, we can help you with a special offer

Why us?

We have been a Microsoft partner for many years and are among the top certified companies worldwide. We invest in development and our clients trust us with our knowledge, passion and experience. We know how to strengthen security, improve performance in your company and maximize its potential.

Senetic in numbers



15

years of experience



27

offices worldwide



160

national markets



4

-time Microsoft Partner of the Year



2M

customers a year

Want to learn more about the packages we offer?

Get in touch with us!

1 (302) 888-9001

microsoft@senetic.com

www.senetic.com/microsoft365